

CLEO-DENT[®]



Right partner in the dental care sector



• TOOTHPASTES	4-11
Bio Toothpastes	4-6
Charcoal	6
Complete Care	7
Extra Fresh	7
Sensitive	8
Whitening	8
Gum Care	9
Denture Adhesive Cream	9
Junior Kids	10-11
• MOUTH CARE	12-17
Cleaning Tablets	12
Mouthwash	13
Mouth Spray	13
Dental Floss	14
Floss Toothpicks	14-16
Interdental Brushes	16
Orthodontic Wax	17
• TOOTHBRUSHES	18-33
• FIRST TEETH TOOTHBRUSH	18
• KIDS & JUNIOR TOOTHBRUSHES	19-24
• BAMBOO WOODEN TOOTHBRUSHES	24
• CHARCOAL BRISTLES	25
• ORTHODONTIC TOOTHBRUSHES	26

• EXTRA PROTECTION	27
Double protection	27
Triple protection, Maxi Care	27
Triple protection, Maxi Care	27
• SPECIAL PROTECTION	28
Mountain Bristles, Maxi Care	28
Wide & Thinner Head Toothbrush	28
Cross & Spiral Toothbrush	28
• MICROPLUS BRISTLES	29
Microplus Bristles, Extra Rubber Wings	29
Ergonomic Handle, Maxi clean	29
Ergonomic Handle, Maxi clean	29
• COMPLETE CARE	30
Complete Care	30
Maxi Clean, Flex Zone	30
Complete Care, Flex Zone	30
Maxi Clean, Flex Zone	30
• FOR SENSITIVE TEETH	31
• TRAVEL TOOTHBRUSH	32-33
• DISPLAY STANDS	34

• **BIO COMPLETE CARE 5 IN 1 TOOTHPASTE - 75 ml**

Fresh breath - Protects gums and enamel - Helps prevent tooth decay - Fights plaque formation - Helps maintain the natural whiteness of the teeth.

CLEO-DENT® Bio complete care toothpaste 5 in1, is intended for strong and healthy teeth. The formula contains 99% ingredients of natural origin, with active ingredients that guarantee a daily maximum protection against the most common dental problems.

Ingredients: Sorbitol, Aqua, Mentha Piperita Leaf Water, Hydrated Silica, Xylitol, Aloe Barbadensis Leaf Juice, Lauryl Glucoside, Xanthan Gum, Aroma, Calcium Carbonate, Hydroxyapatite, Glycerin, Bentonite, Sodium Benzoate, Stevia Rebaudiana Extract, Citric Acid, Potassium Sorbate, Echinacea Purpurea Extract, Menthol, Carvone, Mentha Piperita Oil, Mentha Viridis Leaf Oil, Anethole, Limonene.

OPD - 2080 (Ean - 7261894220803)

• **BIO EXTRA FRESH TOOTHPASTE - 75 ml**

Extra fresh breath - Protects teeth & gums - Mint, Aloe vera & Eucalyptus.

CLEO-DENT® Bio Extra Fresh Toothpaste not only fights against unpleasant smells but also ensures a long-lasting refreshing effect while preventing plaque and protecting against tooth decay. Experience the ultimate freshness with every brush.

Ingredients: Aqua, Mentha Piperita Leaf Water, Sorbitol, Hydrated Silica, Sodium Bicarbonate, Aloe Barbadensis Leaf Juice, Lauryl Glucoside, Xanthan Gum, Aroma, Menthol, Mentha Piperita Oil, Sodium Benzoate, Stevia Rebaudiana Extract, Citric Acid, Glycerin, Potassium Sorbate, Eucalyptus Globulus Leaf Extract, Anethole, Eucalyptus Globulus Oil, Mentha Viridis Leaf Oil, Carvone, Limonene, Pinene, BETA-Caryophyllene.

OPD - 2081 (Ean - 7261894220810)



99% OF NATURAL
ORIGIN INGREDIENTS



99% OF NATURAL
ORIGIN INGREDIENTS



• BIO SENSITIVE TOOTHPASTE - 75 ml

Helps to relieve gums sensitivity - Keeps your breath fresh- Strengthens and protects your gums for strong and healthy teeth.

CLEO-DENT® Bio Sensitive Toothpaste with 99% of natural origin ingredients is specifically formulated to address the needs of individuals with sensitive teeth, aiming to reduce discomfort and protect delicate enamel while promoting overall oral health

Ingredients: Sorbitol, Aqua, Mentha Piperita Leaf Water, Hydrated Silica, Aloe Barbadensis Leaf Juice, Lauryl Glucoside, Xanthan Gum, Aroma, Bentonite, Sodium Benzoate, Stevia Rebaudiana Extract, Glycerin, Citric Acid, Potassium Sorbate, Echinacea Purpurea Extract, Menthol, Mentha Viridis Leaf Oil, Carvone, Mentha Piperita Oil, Anethole, Limonene.

OPD - 2082 (Ean - 7261894220827)

Bio

99% OF NATURAL
ORIGIN INGREDIENTS



• BIO STRAWBERRY KIDS TOOTHPASTE - 75 ml

Pleasant strawberry flavor - Protects and strengthens teeth - With Aloe Vera and Mallow Extract - Sugar Free.

CLEO-DENT® Bio Strawberry Kids Toothpaste with 99% of natural origin ingredients provides a safe and effective solution to keep little teeth clean while minimizing sensitivity and protecting delicate enamel. It combines the fun and flavor of strawberry with the effectiveness of active ingredients.

Ingredients: Sorbitol, Mentha Piperita Leaf Water, Aqua, Hydrated Silica, Xylitol, Aloe Barbadensis Leaf Juice, Lauryl Glucoside, Xanthan Gum, Aroma, Malva Sylvestris Flower/Leaf Extract, Sodium Benzoate, Stevia Rebaudiana Extract, Citric Acid, Potassium Sorbate.

OPD - 2084 (Ean - 7261894220841)

Bio

99% OF NATURAL
ORIGIN INGREDIENTS



• BIO CHARCOAL WHITENING TOOTHPASTE - 75 ml

Features a whitening action - With Aloe Vera - Protects teeth & gums - Prevents cavities and reinforces the enamel.

CLEO-DENT® Bio Charcoal Whitening Toothpaste, with aloe vera and organic mentha that meet advanced oral care. It harnesses the power of activated charcoal to gently lift stains and brighten your smile. Our formula not only whitens but also helps maintain oral health while being gentle on your teeth and gums.

Ingredients: Sorbitol, Mentha Piperita Leaf Water, Hydrated Silica, Aqua, Aloe Barbadensis Leaf Juice, Lauryl Glucoside, Xanthan Gum, Aroma, Charcoal Powder, Bentonite, Sodium Fluoride, Sodium Benzoate, Stevia Rebaudiana Extract, Citric Acid, Potassium Sorbate, Menthol, Mentha Viridis Leaf Oil, Carvone, Mentha Piperita Oil, Anethole, Limonene.

Sodium Fluoride (1450 ppm fluoride)

OPD - 2083 (Ean - 7261894220834)

• CHARCOAL EXTRA WHITENING TOOTHPASTE - 75 ML

CLEO-DENT® Extra Whitening Charcoal Toothpaste, naturally whitens your teeth and removes harmful bacteria, coffee, cigarette or tea stains. Guarantees daily maximum protection against the most common dental problems.

Ingredients: Aqua, Sorbitol, Hydrated Silica, Tetrapotassium Pyrophosphate, Peg-8, Disodium Pyrophosphate, Sodium Lauroyl, Sarcosinate, Aroma, Cellulose Gum, Sodium Fluoride, Sodium Saccharin, Sodium Benzoate, Charcoal Powder, Ci 77268:1.

Sodium Fluoride (1450 ppm fluoride)

OPD - 2060 (Ean - 7261894220605)



99% OF NATURAL
ORIGIN INGREDIENTS



• COMPLETE CARE 8 IN 1 TOOTHPASTE - 75 ml

Anti plaque - Fight tartar - Antibacterial - Whitening - Fresh breath - Caries Protection - Strengthens enamel - Strengthens gums.

CLEO-DENT® toothpaste 8 in 1 is a complete care for strong and healthy teeth. Enriched with antibacterial agent and zinc, guarantees a daily maximum protection against the most common dental problems.

Ingredients: Aqua, Sorbitol, Hydrated Silica, Tetrapotassium Pyrophosphate, Sodium Lauryl Sulfate, Aroma, Cellulose Gum, Sodium Monofluorophosphate, Sodium Saccharin, Sodium Benzoate, Sodium Fluoride, Zinc Citrate, Cetylpyridinium Chloride, Mica, CI 77891, CI 77491, CI 77492. Contains Sodium Monofluorophosphate

Sodium Fluoride (1450 ppm fluoride)

OPD - 2036 (Ean - 7261894220360)



• EXTRA FRESH TOOTHPASTE - 75 ML

CLEO-DENT® Extra Fresh Toothpaste helps prevent plaque and protect against tooth decay. Used on a daily basis. Ensures protection of a toothpaste with fluoride. The extra fresh scent leaves a persistent feeling of freshness.

Ingredients: Aqua, Sorbitol, Hydrated Silica, Tetrapotassium Pyrophosphate, Peg-8, Sodium Lauryl Sulfate, Aroma, Xanthan Gum, Titanium Dioxide, Sodium Monofluorophosphate, Panthenol, Sodium Saccharin, Sodium Fluoride, Cetylpyridinium Chloride, Menthol, Ci 47005, Ci 42051. Contains Sodium Fluoride And Sodium Monofluorophosphate (1450 ppm Fluoride).

Sodium Fluoride (1450 ppm fluoride)

OPD - 2051 (Ean - 7261894220513)



• SENSITIVE TOOTHPASTE - 75 ml

CLEO-DENT® Sensitive Toothpaste prevents gum disease, shields sensitive teeth and ensures protection of a toothpaste with fluoride. The aroma leaves a persistent feeling of freshness. It protects the dentin, and keeps you from feeling pain when eating and drinking.

Only for adults.

Ingredients: Aqua, Sorbitol, Hydrated Silica, Potassium Nitrate, PEG-8, Sodium Lauryl Sulfate, CI 77891, Aroma, Xanthan Gum, Panthenol, Sodium Saccharin, Sodium Fluoride, Cocamidopropyl Betaine, Sodium Benzoate, Allantoin, Limonene, Eugenol. Contains Sodium Fluoride (1470 ppm F).

Sodium Fluoride (1470 ppm fluoride)

OPD - 2056 (Ean - 7261894220568)



• ULTIMATE WHITENING TOOTHPASTE - 75 ML

CLEO-DENT® ultimate whitening has a special formula to remove stains from teeth to restore teeth to their natural whiteness. It can whiten teeth slightly by removing surface stains, such as those caused by drinking coffee or smoking. Whitening toothpaste can also be used after a bleaching treatment to help maintain results.

Ingredients: Aqua, Sorbitol, Hydrated Silica, Tetrapotassium Pyrophosphate, Sodium Lauryl Sulfate, Aroma, Sodium Monofluorophosphate, Xanthan Gum, Sodium Saccharin, Sodium Benzoate, Calcium Glycerophosphate, Cetylpyridinium Chloride, CI 77891, CI 74160. Contains Sodium Monofluorophosphate (1450 ppm F).

Sodium Fluoride (1450 ppm fluoride)

OPD - 2057 (Ean - 7261894220575)



• GUM CARE TOOTHPASTE - 75 ml

Fresh breath, reduces sensitivity of teeth and gums, helps protect against cavities, tolerance tested under odontological control.

CLEO-DENT® Gum Care Toothpaste targets the root cause of common oral issues with antibacterial protection. Clinically proven and specifically engineered, it defends against gum redness, inflammation, and bleeding

Ingredients: Sodium Bicarbonate, Awua, Glycerin, Cocamidopropyl Betaine, Xanthan Gum, Aroma, Alcohol Denat., Menthol, Sodium Fluoride, Sodium Saccharin, Sodium Benzoate, Commiphora, Murrha Resin Extract, Echinacea Purpurea Extract, Citic Acid, Salvia Officinalis Leaf Extract, Rosmarinus Officinalis Leaf Extract, Lactic Acid, Chamomilla Recutita Flower Extract, Potassium Sorbate, Mentha Piperita Oil, CI 77491.

Sodium Fluoride (1400 ppm fluoride)

OPD - 2069 (Ean - 7261894220698)



• DENTURE ADHESIVE CREAM - 40 G.

CLEO-FIX UTRA is a denture adhesive cream that provides a strong long lasting hold throughout the day through its innovative zinc-free formula, and prevents food particles from getting trapped under the denture and causing bad smells. Simple to use, ensures a quick adhesion and offers you a daily security that allows you to eat, talk and smile with confidence. Ideal for all types of dentures and bridges. Apply the paste once a day. The effectiveness and duration of the adhesive force may vary according to personal physical characteristics (salivation, anatomy of the mouth, general state of health, age).

Ingredients: Cellulose Gum, Calcium/sodium PVM/MA Copolymer, Paraffinum Liquidum, Petrolatum.



Upper denture

Lower denture

Partial denture

OPD - 2071 (Ean - 7261894220711)

Extra strong hold | All types of dentures



• JUNIOR TOOTHPASTE - 75 ML

CLEO-DENT® Junior toothpaste has been specially formulated to give the best possible care to your child's teeth as they develop. The gentle formulation contains fluoride and calcium to prevent cavity and protect his teeth.

- Prevent Cavities.
- Strengthens Enamel.
- Especially designed for 6+ kids.
- Convenient stand-up tube and easy open cap.

Ingredients: Sorbitol, Aqua, Hydrated Silica, PEG-8, CI 77891, Sodium Lauryl Sulfate, Aroma, Sodium Monofluorophosphate, Xanthan Gum, Sodium Saccharin, Sodium Benzoate, Calcium Glycerophosphate.

Sodium Monofluorophosphate (1000 ppm F) OPD - 2058 (Ean - 7261894220582)



• KIDS TOOTHPASTE - 50 ML

Great flavor, smooth gel and colorful tube make brushing fun for kids of all ages. Natural fluoride helps prevent cavities, and natural anti-bacterial makes young smiles clean and healthy.

- With Calcium | Sugar free | Helps strengthen and protect teeth from cavities | Fights bad breath | Strawberry flavor that kids love | Especially designed for kids 2 - 6 years | Convenient stand-up tube and easy open cap.

Ingredients: Aqua, Sorbitol, Hydrated Silica, PEG-8, Sodium Lauryl Sulfate, Sodium Saccharin, Aroma, Cellulose Gum, Panthenol, Sodium Benzoate, Calcium Glycerophosphate, Sodium Fluoride, CI 73360.

Sodium Fluoride (450 ppm fluoride) OPD - 2050 (Ean - 7261894220506)



• KIDS TOOTHPASTE - 50 ML

CLEO-DENT® Bubble gum kids toothpaste is sugar free

- BUBBLEGUM flavor | Strengthens Enamel
- Helps prevent cavities | Strengthens & protects developing teeth
- Sparkling colourful gel | 2-6 years

Ingredients: Sorbitol, Aqua, Hydrated Silica, Peg-8, Sodium Lauryl Sulfate, Aroma, Xanthan Gum, Sodium Saccharin, Sodium Benzoate, Calcium Glycerophosphate, Sodium Fluoride, Tocopheryl Acetate, Mica, Ci 77891, Ci 42090. Contains Sodium Fluoride (450 ppm F).

Sodium Fluoride (450 ppm fluoride)

OPD - 2059 (Ean - 7261894220599)



• DENTAL APPLIANCES CLEANING TABLETS (30 MINT TASTED TABLETS)

Use **CLEO-DENT®** cleaning tablets daily to clean retainers and aligners, full-plate dentures, and partials, in addition to other dental appliances. It fights plaque build-up and kills odor-causing bacteria in just 3 minutes while being gentle and giving them a minty fresh flavor.

- Kills odor-causing bacteria to help freshen your breath
- Fast and deep clean in just 3 minutes
- Suitable for cleaning all dental appliances like dentures, invisible braces and protective brackets

DIRECTIONS:

1. Drop one tablet into enough warm water (not hot) to fully submerge the dental appliance.
2. Let the appliance soak for 3 minutes to thoroughly clean it.
3. Remove the appliance from the solution and rinse it well. It is now odor-free and ready for use.

NOTE: for best results, gently brush appliance using a soft brush then rinse again. Discard remaining solution immediately after use.

Ingredients: Sodium Bicarbonate, Sodium Carbonate Peroxide, Citric Acid, Sodium Sulfate, Potassium Caroate, Lactose, PVP, Sodium Lauryl Sulfate, Aroma, Menthol, Alcohol.

3-MIN ACTION

OPD - 2072 (Ean - 7261894220728)

POWER CLEAN



MOUTH CARE



• MOUTHWASH

CLEO-DENT® mouthwash is a recommended brand for your oral care. It contains fluoride and antibacterial agent, it is clinically proven to strengthen teeth and prevent tooth decay. Kills the common germs in the mouth cavity, prevent inflammation of the gum and mouth.

Usage: Common use involves rinsing the mouth with about 20ml (2/ 3 fl oz) of mouthwash two times a day after brushing

Ingredients: Aqua, Sorbitol, Glycerin, PEG-40 Hydrogenated Castor Oil, Sodium Benzoate, Aroma, Allantoin, Cetylpyridinium Chloride, Sodium Fluoride, Sodium Saccharin, Citric Acid, Limonene, Menthol, BETA-Caryophyllene, Terpineol, CI 42090, CI 47005. Contains Sodium Fluoride (226 ppm fluoride).

250 ml

500 ml

OPD - 2067 (Ean - 726189422067)

OPD - 2068 (Ean - 7261894220681)



• FRESH BREATH MOUTH SPRAY

FOR THE ULTIMATE FRESH MOUTH FEELING

Cleo-dent® Fresh Mint spray gives you instant fresh breath anytime. Long-lasting effect. Helps to overcome the effects of eating, drinking, and smoking.

- ✓ Antiseptic, sugar-free,
- ✓ Keep away from direct sunlight.
- ✓ Do not refrigerate.



OPD - 2065 (Ean - 7261894220650)

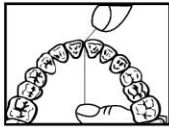
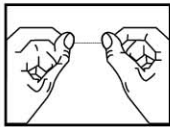
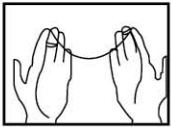


OPD - 2066 (Ean - 7261894220667)

• DENTAL FLOSS - FRESH MINT FLAVOR

CLEO-DENT® dental floss clinically proven, contains advanced stain technology for quick and safe elimination of stains, including tobacco and coffee, between teeth helping in preventing gum diseases.

- ✓ Perfect Cleaning of interdental spaces
- ✓ Necessary complement of dental hygiene
- ✓ Waxed and Minted



55YD | 50M

OPD - 2029 (Ean - 7261894220292)



32.8YD | 30M

OPD - 2009 (Ean - 7261894220094)

• 2 IN 1 FLOSS PICK WITH INTERDENTAL BRUSH

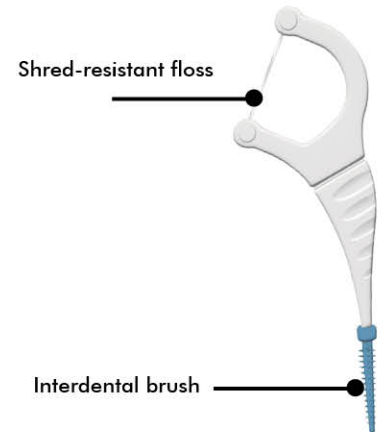


Introducing the ultimate solution for a thorough and effective oral hygiene routine: The 2-in-1 floss pick and interdental brush! This innovative tool combines the best of both worlds to ensure your teeth and gums stay healthy and clean.

Caution: Adult supervision is recommended for children under 10. Gums may bleed the first few times you floss. If bleeding persists or gums remain red and swollen, consult your dentist.

OPD - 2101 (Ean - 7261894221015)

30 pcs/bag



Shred-resistant floss

Interdental brush

• **FLOSS TOOTHPICKS**

Floss toothpicks are especially designed to help in removing plaque from the spaces between the teeth and gums that are not cleaned by toothbrush.

- ✓ Perfect Cleaning of interdental spaces
- ✓ Necessary complement of dental hygiene
- ✓ Waxed and Minted
- ✓ Keep away from children

OPD - 2030 (Ean - 7261894220308)

50 pcs/can



Use this side of toothpick to pick away the shred of tooth surface.



Use the floss to clean away the shred and plaque between the teeth.

eco **ECO-FRIENDLY DOUBLE FLOSS PICK**



MINT FLAVORED

1: Double non-shredding floss that comfortably slides between teeth to maximize plaque removal.

2: Pick is designed to clean hard-to-reach areas.

3: Upgraded with a tongue cleaner



OPD - 2102 (Ean - 7261894221022)

50 pcs/bag

ON THE GO DENTAL FLOSS PICKS



Shred-resistant floss



Toothpick

MINT FLAVORED

5 pcs/case

OPD - 2105 (Ean - 7261894221053)

• DENTAL FLOSS PICKS DISPENSER

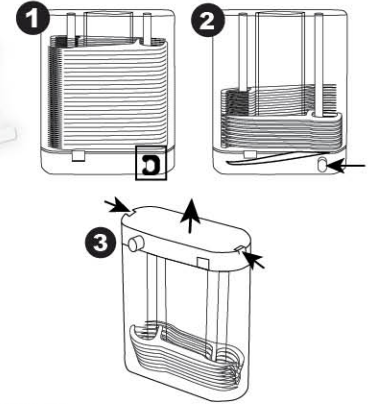
One easy press to automatically pop out a dental floss stick

DIRECTIONS OF USE:

- 1- Remove the protection plug for the first use
- 2- Press the button to automatically pop up the floss pick from any side
- 3- Cover is removable, push aside the buckle to open the dispenser
- 4- Refill the dispenser with new flosspicks when needed

Refillable | Toothpick end | Shred-resistant floss

OPD - 2104 (Ean - 7261894221046) 78 pcs/dispenser



• INTERDENTAL BRUSHES 5 pcs / blister card

- For Hard-To-Reach spaces.
- Cleans where toothbrushes cannot.



OPD - 2004 (0.4mm) OPD - 2001 (0.6mm) OPD - 2002 (0.8mm) OPD - 2003 (1.0mm)



• FLEXIBLE INTERDENTAL BRUSHES



OPD - 2005 (Ean - 7261894220056)



Multiple sizes to meet the basic needs of cleaning gaps between teeth



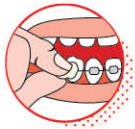
Elastic head
180° pliable



50 pcs / case

• **ORTHODONTIC WAX WITH A PLASTIC CUTTER**

- Relieves pain and irritation from orthodontic appliances
- Protects the gums and the linings of your cheeks and lips, providing a comfortable barrier from the sharp ends of wires and pointed appliance parts.
- Also suitable for partial dentures whose wire clasps may be causing discomfort, sore spots, or abrasions.



CLEAR / TRANSPARENT

OPD-2011 (Ean - 7261894120110)

2 cases

• **ORTHODONTIC WAX**



OPD-2010 (Ean - 7261894120103)

2 cases

• **A TOOTHBRUSH AND TEETHER SET** **3+**
months



MY FIRST TEETHER

- Soft bristles help massage gums and clean teeth.
- Firm surface helps soothe gums.
- Easy-grip handle suits little hands.
- Flower guard ensures your baby's safety.



MY FIRST BRUSH

- Long handle—comfortable for adult hands.
- Small brush head suits baby's first teeth.
- Soft bristles, gentle on delicate gums.



SOFT

OPD - 5014 (Ean - 7262894250142)

KIDS TOOTHBRUSHES

CLEO-DENT

The U-shaped Kids Donut Toothbrush is designed to make teeth brushing fun, easy, and effective for kids. It is made of food-grade silicone material, ensuring safety for children. It offers a 360-degree cleaning method, allowing for effective cleaning of teeth and gums on all sides and providing a practical solution for children who are just learning to brush their teeth.

The CLEO-DENT® kids Shark toothbrush is specially made for children. Its soft rounded bristles are kind to teeth and gums, and the handle part of the brush can be combined up and down with the shark head. Fun fish handle & Shark head cover designed for children's small hands. The handle tip with a suction system can stand alone in order to keep the brush straight.

Donut Toothbrush

2 - 6 years



SOFT

OPD - 2062 (Ean - 7261894220629)

Kids Shark Toothbrush



SOFT

OPD - 2061 (Ean - 7261894220612)

The **CLEO-DENT**® range of Kids toothbrushes is uniquely designed for the healthiest smiles at every age. This brush is specially designed for the needs of children ages 2 years and older that have a combination of baby and adult teeth.

- 1- Colored dot to measure the recommended amount of toothpaste.
- 2- Thumb rest and cushioned handle for better control.

**SOFT**

OPD-5010 (Ean - 7262894250104)

6-12 Years

**SOFT**

OPD - 5012 (Ean - 7262894250128)

6-12 Years

**SOFT**

OPD - 5011 (Ean - 7262894250111)

2-7 Years

**SOFT**

OPD - 5013 (Ean - 7262894250135)

2-7 Years

KIDS TOOTHBRUSHES

CLEO-DENT

The **CLEO-DENT**® range of Kids toothbrushes is uniquely designed for the healthiest smiles at every age. This brush is specially designed for the needs of children ages 2 years and older that have a combination of baby and adult teeth.

- 1- Colored dot to measure the recommended amount of toothpaste.
- 2- Thumb rest and cushioned handle for better control.



SOFT

OPD-2017 (EAN - 7261894220179)



SOFT

OPD - 2018 (Ean - 7261894220186)



SOFT

OPD - 2019 (Ean -7261894220193)



SOFT

OPD - 2020 (Ean - 7261894220209)

The **CLEO-DENT**® range of Kids toothbrushes is uniquely designed for the healthiest smiles at every age. This brush is specially designed for the needs of children ages 2 years and older that have a combination of baby and adult teeth.

- 1- Colored dot to measure the recommended amount of toothpaste.
- 2- Thumb rest and cushioned handle for better control.

**SOFT**

OPD - 2021 (Ean - 7261894220216)

**MEDIUM**

OPD - 2023 (Ean - 7261894220230)

**SOFT**

OPD - 2022 (Ean - 7261894220223)

**MEDIUM**

OPD - 2024 (Ean - 7261894220247)

KIDS TOOTHBRUSHES

CLEO-DENT

- 1- A unique tongue cleaner gently helps to remove odor-causing bacteria for a fresh breath.
- 2- Thumb rest and cushioned handle for better control.
- 3- Colored dot to measure the recommended amount of toothpaste.



MEDIUM

OPD - 2035 (Ean - 7261894220353)



MEDIUM

OPD - 2034 (Ean - 7261894220346)

• JUNIOR TOOTHBRUSH

- 1- ROUNDED BRISTLES: With soft rubber filaments gently massage gums and protect enamel.
- 2- SOFT GRIP HANDLE: Anti-slip handle, let you easily control the direction of the handle.
- 3- TONGUE CLEANER: The radial of soft rubber behind the toothbrush head, can be used as a tongue cleaner to scrape the thick dirt on the tongue.



SOFT

OPD - 2052 (Ean - 7261894220520)

Upgrade your oral care routine with our Cleo-dent® Bamboo Charcoal-Infused Toothbrush, a powerful yet sustainable solution for a brighter smile.

Crafted from natural bamboo and bristles infused with activated charcoal, this toothbrush gently removes surface stains, fights bacteria, and detoxifies your mouth—all while being kind to the planet. The ergonomic handle ensures a comfortable grip, and the ultra-soft bristles provide a thorough yet gentle clean. With 100% biodegradable materials and Eco-friendly packaging, this toothbrush is the perfect choice for eco-conscious consumers who refuse to compromise on quality or sustainability.

• **KIDS**
BAMBOO TOOTHBRUSH



SOFT

OPD - 5023 (Ean - 7262894250234)

• **ADULT**
BAMBOO TOOTHBRUSH



SOFT

OPD - 5022 (Ean - 7262894250227)



CHARCOAL BRISTLES



The activated charcoal helps naturally whiten teeth by absorbing and lifting surface stains, promoting a cleaner, brighter smile. These toothbrushes often feature ultra-fine bristles that are gentle yet effective at reaching deep into hard-to-reach areas, removing plaque, and neutralizing odors.

The charcoal also has antibacterial properties, that help reduce bacteria buildup and promote fresh breath. With regular use, a charcoal-infused toothbrush can provide a superior clean. It is recommended to replace the toothbrush every three months to ensure maximum performance, as a new brush can remove up to 30% more plaque compared to one that is 3 months old.

- **FRESH CHARCOAL INFUSED BRISTLES**



SOFT

OPD - 5018 (Ean - 7261894220261)

- **CHARCOAL THIN BRISTLES**



SOFT

OPD - 5019 (Ean - 7262894250197)

- **DOUBLE-TAPERED THIN BRISTLES**



SOFT

OPD - 5020 (Ean - 7262894250203)

Braces require daily brushing for protection, freshness and effective stain removal. For this purpose Cleo-dent provides the orthodontic toothbrush (angle trimmed) to clean the hard to reach surface.

- **JUNIOR ORTHODONTIC**



- 1- **ROUNDED BRISTLES:** End-rounded bristles and arc shape effectively protect gums and teeth enamel.
- 2- **SOFT GRIP HANDLE:** Non-slip soft rubber grip for excellent control and effective brushing.
- 3- **TOOTHBRUSH COVERS:** Easy to use toothbrush covers keep your toothbrush sanitized. Fits all sizes.

SOFT

OPD - 2031 (Ean - 7261894220315)

- **ADULT ORTHODONTIC**



- 1- **ROUNDED BRISTLES:** End-rounded bristles and arc shape effectively protect gums and teeth enamel.
- 2- **SOFT GRIP HANDLE:** Non-slip soft rubber grip for excellent control and effective brushing. Ergonomically designed handle provides maximum comfort and holding upon usage.
- 3- **INDICATOR:** Colored indicator bristles fade with use, which remind you to change your brush.
- 4- **TOOTHBRUSH COVERS:** Easy to use toothbrush covers keep your toothbrush sanitized. Fits all sizes.

SOFT

OPD - 2032 (Ean - 7261894220322)

EXTRA PROTECTION

CLEO-DENT

The CLEO-DENT® range of toothbrushes is uniquely designed for the healthiest smiles at every age.

- 1- The unique tongue cleaner gently helps to remove odor-causing bacteria for a fresh breath.
- 2- Center colored dot to measure the recommended amount of toothpaste.
- 3- Thumb rest and cushioned handle for better control.

• DOUBLE PROTECTION



MEDIUM

OPD - 2026 (Ean - 7261894220261)

• TRIPLE PROTECTION MAXI CARE



SOFT

OPD - 2027 (Ean - 7261894220278)

• TRIPLE PROTECTION MAXI CARE



MEDIUM

OPD - 2046 (Ean - 7261894220469)

Our Special Protection Toothbrush range is thoughtfully designed to deliver targeted care through innovative bristle technologies. From mountain-shaped bristles that adapt to the natural contours of your teeth, to wide and thin bristles that reach deep between spaces, and cross and spiral patterns that enhance plaque removal—each toothbrush offers a distinct cleaning experience.

- **MOUNTAIN BRISTLES
MAXI CARE**



MEDIUM

OPD - 5017 (Ean - 7262894250173)

- **WIDE AND THINNER
HEAD TOOTHBRUSH**



SOFT

OPD - 5021 (Ean - 7262894250210)

- **CROSS AND SPIRAL
TOOTHBRUSH**



MEDIUM

OPD - 5024 (Ean - 7262894250241)

MICROPLUS BRISTLES

CLEO-DENT

- 1- Rounded polished bristles with soft rubber filaments gently massage gums and protect enamel.
- 2- Anti-slip handle, let you easily control the direction of the brush.
- 3- The radial of soft rubber behind the toothbrush head, can be used as a tongue cleaner to scrape the thick dirt on the tongue.
- 4- With a very practical plastic cover to keep the toothbrush clean

• EXTRA RUBBER WINGS



HARD

OPD - 2033 (Ean - 7261894220339)

• ERGONOMIC HANDLE MAXI CLEAN



SOFT

OPD - 2038 (Ean - 7261894220384)

• ERGONOMIC HANDLE MAXI CLEAN



SOFT

OPD - 2037 (Ean - 7261894220377)

- 1- The unique tongue cleaner gently helps to remove odor-causing bacteria for a fresh breath.
- 2- Center colored dot to measure the recommended amount of toothpaste.
- 3- Thumb rest and cushioned handle for better control.



SOFT

OPD - 2016 (Ean - 7261894220162)



SOFT

OPD - 2040 (Ean - 7261894220407)



SOFT

OPD - 2041 (Ean - 7261894220414)



MEDIUM

OPD - 2048 (Ean - 7261894220483)

FOR SENSITIVE TEETH

CLEO-DENT

Sensitive teeth require extra care—and the right toothbrush can make all the difference. Specially designed for comfort and protection, toothbrushes for sensitive teeth feature ultra-soft bristles that gently clean without irritating enamel or gums. They help remove plaque effectively while minimizing discomfort, making daily oral care a soothing experience rather than a painful one. Ideal for those with gum sensitivity or enamel wear, these toothbrushes ensure a thorough yet gentle clean, supporting healthier teeth and a more comfortable smile every day.

• SUPER SENSITIVE



SOFT

OPD - 5015 (Ean - 7262894250159)

• SUPER SENSITIVE



SOFT

OPD - 2028 (Ean - 7261894220285)

• EXTRA SENSITIVE



SOFT

OPD - 2049 (Ean - 7261894220490)

**MEDIUM****OPD - 2025 (Ean - 7261894222025)****SOFT****OPD - 5016 (Ean - 7262894250166)**

- 1- Cross nursing brush: the tilting cross brush hair can enter the small dental slots, and eliminate the dental plaque between the teeth more effectively than traditional one.
- 2- Rounded bristles: curved bristles contoured to the shape of your teeth for advanced cleaning. All the bristles ends have been grounded to remove the acute angles. All ends are with rounded surface. It protects the gum from being hurt, effectively cleans the teeth, and defends periodontal disease.
- 3- Soft grip handle: the unique nice handle with soft rubber provides you good feeling. Anti-slip grip gives you exceptional control over brush-strokes.
- 4- Indicator: colored indicator bristles fade with use, which remind you to change your brush.

• **TRAVEL KIT** On-the-go must have kit



MEDIUM

OPD - 5025 (Ean - 7262894250258)

Cleodent® Dental Travel Kit is designed to provide complete oral hygiene while traveling. Each accessory has been carefully selected to meet your dental care needs on the go.

This kit includes:

1. Anti-Plaque Toothbrush – Medium, finely rounded bristles ensure effective cleaning while being gentle on the gums.
2. Interdental Brush – A slim metal wire easily slips between teeth to remove plaque and food particles.
3. Tongue Scraper – Complements brushing by removing bacteria and helping keep your breath fresh.
4. Toothpaste – Optional

All items are neatly stored in a compact box for protection and convenient transport.

CLEO-DENT

DISPLAY STANDS



Small Size: 40 x 70cm



Big Size: 50 x 190cm





Distributed by:

UNIMARC S.A.R.L.

Head Office:

Bd des Eplatures 64, 2300 La Chaux-de-Fonds, Switzerland

Tel: +41 762 906 320, E-mail: info@unimarc.ch

Website: www.cleodent.com

OPTIMAL MEDICS S.A.R.L.

Head Office:

Horizon Building, Doha Entrance, Choueifat, Lebanon

Mob: +961 70 555 445, Tel: +961 5 812 850

E-mail: info@optimalmedics.com, Website: www.optimalmedics.com

