



Natural

Beauty Accessories For Wellness & Spa



E.26-1

THE BODY SET®

"The Body Set" shows no mercy when it comes to beauty and personal hygiene. Your body is a sacred temple that needs to be glorified at all times. We bring you a wide selection of premium pharmaceutical and beauty products that will brush you off from head to toe.



TABLE OF CONTENTS



- BATH SETS 5 - 17
- HAIRBRUSHES AND COMBS 18 - 25
- MAKEUP TOOLS 26 - 32
- BEAUTY TOOLS 33 - 36
- SKIN & NAILS CARE 37 - 47
- SHAVING 48 - 49
- MARKETING SUPPORT 50 - 51



BATH SETS

When it comes to transforming your bathing routine into a luxurious escape, a well-chosen bath set and loofah can make all the difference.

A soothing blend of quality products that not only elevate your daily ritual but also pamper your skin.



Standard Colour Options:



Natural

Lime Green

Brown

White

Graphite

lavender

Blue



Scrub Material Options:



- Hemp Fabric Material -

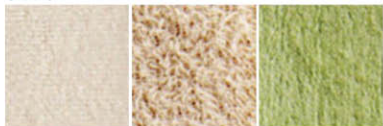
Loofah

Sisal

PE Net



Base Material Options:



Fine
Towel Cloth

Plush
Towel Cloth

Bamboo
Cloth



***** KIDS BATH SET | For total body cleaning and exfoliating

- * Wet the mitt and apply cleansing product.
- * Massage skin with gentle hand pressure.
- * Wash Randomly after use.
- * Washing Machine Safe.
- * Hot Water Resistant.
- * Smooth and gentle on skin.

Main Material: Poly Ethylene | Thin terry | Hemp



OPT - 3029
Ean - 7261894230291



OPT - 3053

Ean - 7261894230536



OPT - 3054

Ean - 7261894230543



OPT - 3055

Ean - 7261894230550



OPT - 3056

Ean - 7261894230567



OPT - 3057

Ean - 7261894230574



OPT - 3058

Ean - 7261894230581



OPT - 3059

Ean - 7261894230598

Main Material:

- Polyethylene
- Fiber

***** NATURAL KONJAC SPONGE | For all skin types



100% Konjac Powder



OPT - 3122

Ean - 7261894231229

Made from vegetable fibers of Konjac plant, can be used as a bath sponge for newborn babies and for adults as well. It contains various positive minerals and antioxidant ingredients. Konjac is rich in vitamins that nourish and smooth skin naturally, deeply cleanse, remove blackheads and gently exfoliate the skin. It helps to stimulate blood flow and promote skin cell renewal. For all skin types including sensitive skin.



1

RINSE:

Rinse and fully hydrate your Konjac Sponge in warm water



2

SQUEEZE:

Squeeze out the excess water to begin your skin cleansing



3

MASSAGE:

Massage your body with the sponge in a circular motion to gently clean, exfoliate and refresh skin.



4

DRY:

Dry the sponge by keeping it in a dry place, ready for the next use

***** BATH GLOVES & PADS



OPT - 3037

Ean - 7261894230376



OPT - 3038

Ean - 7261894230383



OPT - 3042

Ean - 7261894230420

Main Material: Thin terry | Hemp

***** BATH STRAPS



OPT - 3039

Ean - 7261894230390

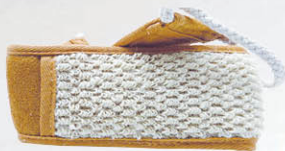
Thin Terry, Hemp



OPT - 3067

Ean - 7261894230673

Chenille



OPT - 3041 (Medium)

Ean - 7261894230406

Thin Terry, Hemp



OPT - 3040 (large)

Ean - 7261894230413

Thin Terry, Hemp



***** BATH PUFF MITT



OPT - 3121

Ean - 7261894231212

Terry, PE Puff

Can strongly remove body dirt without hurting your skin. It will make you feel relaxed and comfortable. Easy to use and clean: shower with warm water for a few minutes, then put the glove on your hands and apply an appropriate amount of shower gel to wipe the body parts.

***** ROSE-SHAPED BATH PUFF



OPT - 3161

Ean - 7261894231618

PE Puff

The rose-shaped bath puffs are typically made from soft, gentle materials that are gentle on the skin. These puffs are designed with a flat back that fits comfortably in the palm of the hand, making them easy to use during bathing.

***** MESH BATH SPONGES



OPT - 3030

Ean - 7261894230307

Polyethylene

Mesh bath sponge is designed to create a rich lather with your body wash or soap, helping to exfoliate your skin and leave it feeling smooth and refreshed. The mesh texture can be great for gently scrubbing away dead skin cells and promoting circulation.



OPT - 3032

Ean - 7261894230321

Polyethylene



OPT - 3068

Ean - 7261894230680

FE Puff



OPT - 3069

Ean - 7261894230697

FE Puff

BATH SCRUBBER



OPT - 3096

Ean - 7261894231052

Sisal Hemp, Black PE Silk,
Black Thick Towel Cloth

LOOFAH SPONGE WITH HANDLE



OPT - 3060

Ean - 7261894230604

Natural Loofah, Fiber + PE



***** BAMBOO LOOFAH



OPT - 3061

Ean - 7261894230611

Green Bamboo, Fiber, Loofah



OPT - 3062

Ean - 7261894230628

Green Bamboo, Fiber, Loofah



OPT - 3063

Ean - 7261894230635

Green Bamboo, Fiber, Loofah



OPT - 3064

Ean - 7261894230642

Green Bamboo, Fiber, Loofah



OPT - 3065

Ean - 7261894230659

Green Bamboo, Fiber, Loofah



OPT - 3066

Ean - 7261894230666

Green Bamboo, Fiber, Loofah

***** VALUE GIFT SET



OPT - 3044

Ean - 7261894230444



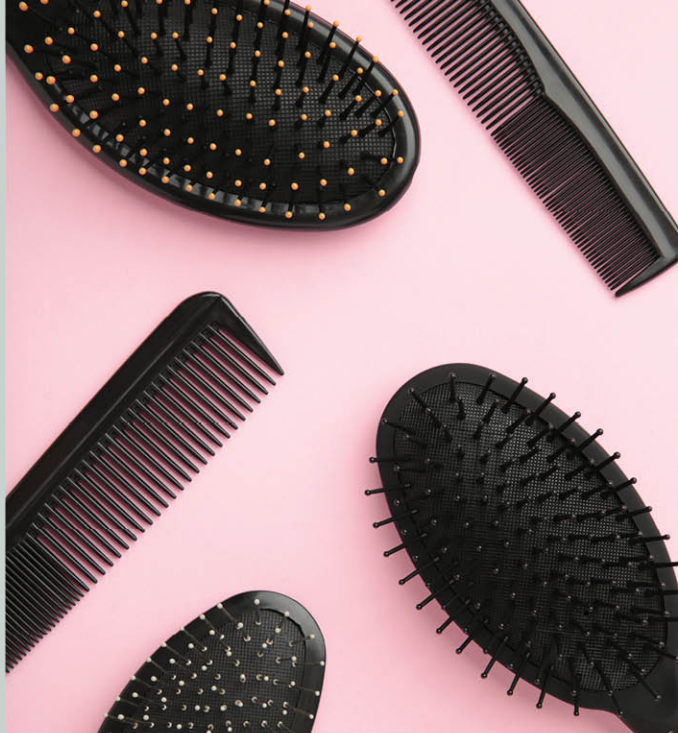
Meet our new Bath Set package: 1 Soft Bath Strap, 1 Loofah Scrubber, 1 Bamboo Bath Scrubber, and 1 Soft Bath Sponge.

Bath-time Bliss, Beyond Compare!

HAIRBRUSHES

A great hair day starts with the right tools. These fundamental grooming accessories are more than just everyday necessities; they are key to maintaining the health and style of your hair.

Choosing the right brush or comb can make a significant difference in the overall health of your hair.



***** PLASTIC HAIR COMBS



OPT - 3114

Ean -

7261894231144



OPT - 3115

Ean -

7261894231151



OPT - 3116

Ean -

7261894231168



OPT - 3117

Ean -

7261894231175

ANTI-LICE COMB



OPT - 3133

Ean -

7261894231335

***** VENTED DETANGLING BRUSHES



OPT - 3193

Ean -

7261894231939



OPT - 3194

Ean -

7261894231946



OPT - 3195

Ean -

7261894231953



OPT - 3196

Ean -

7261894231960



OPT - 3197

Ean -

7261894231977

Self-Cleaning Hair Brush



OPT - 3192

Ean -

7261894231922

Compact Detangling Hair Brush



OPT - 3191

Ean -

7261894231915

Scalp Massager Shampoo Brush



OPT - 3190

Ean -

7261894231908

***** WOODEN HAIR BRUSHES



OPT - 3045

Ean -

7261894230451



OPT - 3046

Ean -

7261894230468



OPT - 3052

Ean -

7261894230529



OPT - 3118

Ean -

7261894231182



OPT - 3119

Ean -

7261894231199



OPT - 3047
Ean -
7261894230475



OPT - 3048
Ean -
7261894230482



OPT - 3049
Ean -
726189423049



OPT - 3112
Ean -
7261894231120



OPT - 3113
Ean -
7261894231137

***** RUBBER COATING HAIR BRUSHES



OPT - 3107

Ean -

7261894231076



OPT - 3108

Ean -

7261894231083



OPT - 3109

Ean -

7261894231090



OPT - 3110

Ean -

7261894231106



OPT - 3111

Ean -

7261894231113

HAIR BRUSHES COUNTER DISPLAY



MAKEUP TOOLS

These versatile sponges are designed to help you achieve a flawless, airbrushed finish with minimal effort.

From blending foundation seamlessly to applying concealer with precision, beauty sponges offer a variety of shapes and textures to cater to your unique needs.



***** DOUBLE MIRROR DESK STAND



OPT - 3123
Ean - 7261894231236
Gold Plated



OPT - 3124
Ean - 7261894231243
Silver Plated

360°
rotating



Reflect a clear
standard image
of your face



7x magnification is
ideal for applying
makeup, tweezing,
or blemish control

***** MAKE UP SPONGES | SOFT, SMOOTH AND FLEXIBLE

Makeup blender sponge (water drop-shaped)



OPT - 3150 | Ean - 7261894231502
Hydrophilic polyurethane



Get a flawless blend with the body set makeup blender sponge which ensures a perfect application for a glowing complexion. Latex-free expands in size when wet and provides an even and smooth blend. Oil resistant, ideal for applying all foundations formulas as well as blush and powder. The large rounded surface area ensures a quick application while the contoured tip offers precision.



Makeup Sponge with plastic handle



OPT - 3152 | Ean - 7261894231526
Hydrophilic polyurethane



Foundation: Dot foundation onto chin, forehead, and cheeks, blend outward from the center of the face. Use the sponge dry for a normal coverage, slightly moistened for sheer coverage.

Blush: Apply cream/powder blush over foundation with a dry sponge. Sweep lightly from cheekbone toward the hairline.

Powder: For loose or pressed powder use the sponge dry. Pick-up powder, then apply it to the skin. Get rid of any excess.



Cover:

Dust-proof



Mushroom Head Powder Puff:

It gives you a perfect makeup application. More durable, soft, smooth texture and very tiny pores.



Handle Design:

Makeup will not make your hands dirty.

Tear drop shapes, puff makeup sponges
in a plastic-box (4Pcs)



OPT - 3151 | Ean -7261894231519

Flower shaped, puff makeup sponges (6Pcs)



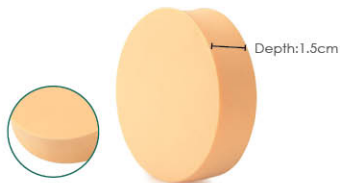
OPT - 3154 | Ean -7261894231540

Square shaped makeup sponges (2pcs)



OPT - 3153 | Ean -7261894231533

Rounded makeup sponge (9cm x 9cm x 1.5cm)



OPT - 3155 | Ean -7261894231557

***** POWDER PUFF SPONGES | SOFT, SMOOTH AND FLEXIBLE

Cushion makeup sponges (2pcs)



OPT - 3157 | Ean -7261894231571

Material: Hydrophilic polyurethane

Cushion makeup sponges (2pcs) in a plastic box



OPT - 3158 | Ean -7261894231588

Material: Hydrophilic polyurethane

Powder puff sponge (1pc)



OPT - 3156 | Ean -7261894231564

Material: Velvet Cotton

***** BLACKHEAD REMOVER

This blackhead remover tool is the safest way to clear pores. It safely removes blackheads quickly and easily. It is looped at one end and pointed at the other one.



- Looped at one end
- Pointed at the other one

How to Use:

It is recommended that you clean your skin with cotton and alcohol before and after extractions to avoid infections. Simply place the loop end over the top of the blackhead and gently press, the blackhead should pop out easily. If it is a little hard to remove, use the needle and carefully scratch the surface of your skin.



OPT - 3125

Ean - 7261894231250



BEAUTY TOOLS

Achieving a flawless look often starts with the right skincare tools, and essentials like tweezers, eyebrow scissors, and eyelash curlers are key to perfecting your beauty routine.

These tools are designed to offer precision and control, allowing you to groom and enhance your features with ease.

***** EYE CARE

Small and lightweight, ideal for travel



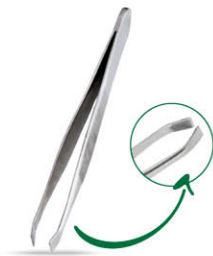
Tweezers

A high-quality lacquered tweezers, ensuring a firm grip due to precision cut gripper edges.



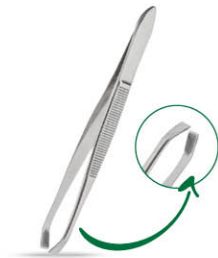
OPT - 3013

Ean - 7261894230130



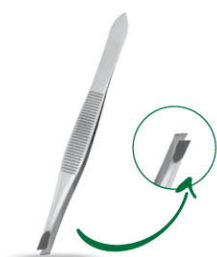
OPT - 3148

Ean - 7261894231489



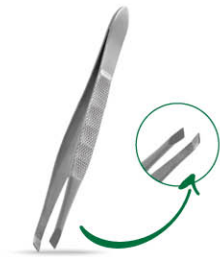
OPT - 3149

Ean - 7261894231496



OPT - 3134

Ean - 7261894231342



OPT - 3129

Ean - 7261894231298



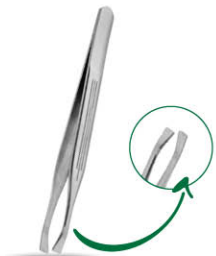
OPT - 3130

Ean - 7261894231304



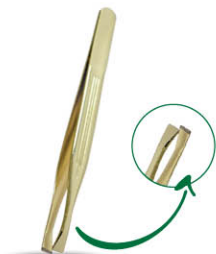
OPT - 3131

Ean - 7261894231311



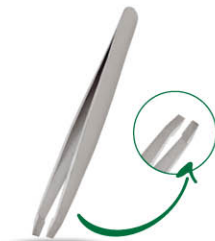
OPT - 3170

Ean - 7261894231700



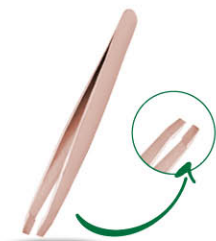
OPT - 3171

Ean - 7261894231717



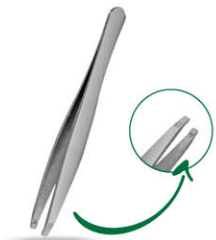
OPT - 3172

Ean - 7261894231724



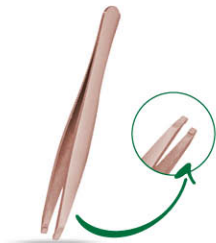
OPT - 3173

Ean - 7261894231731



OPT - 3174

Ean - 7261894231748



OPT - 3175

Ean - 7261894231755



OPT - 3091

Ean - 7261894230918



OPT - 3128

Ean - 7261894231281

Eyebrow Scissors

Easy to handle, the blades are specially formatted for precise trimming.



OPT - 3019

Ean - 7261894230192

Chrome Plated



OPT - 3018

Ean - 7261894230185

Chrome Plated



OPT - 3089

Ean - 7261894230895

Satin



OPT - 3090

Ean - 7261894230901

Mirror Finish



SKIN & NAILS CARE

Pampering your feet and nails is essential for both comfort and style, and a well-chosen selection of foot and nail care products can make all the difference

From maintaining smooth, healthy feet to achieving perfectly groomed nails, these products are designed to elevate your self-care routine.

***** FOOT & NAILS CARE

Pumice stone

Just rub over hard skin areas to reveal softer new skin. Ideal for exfoliation.



OPT - 3127

Ean - 7261894231274

Callus Remover



OPT - 3132

Ean - 7261894231328



Double sided callus remover, one side is coarse and the other one is delicate. Removes dead skin, and smoothes rough feet almost instantly. Lightweight and easy to use with a long handle.

Foot file Removes dead skin, and smooths rough feet instantly.



OPT - 3076

Ean - 7261894230765

Cracked Skin Cutter A pedicure tool. Perfect for removing/cutting callous/corn/hard skin/cuticle.



OPT - 3080

Ean - 7261894230802

Corn Plane Blades



OPT - 3146

Ean - 7261894231465

***** NAILS CARE

Excellent for pedicure and manicure. For a complete cut with a minimum of effort.



Nail Clipper

Gold Plated
With File



OPT - 3010

Ean - 7261894230109

Nail Clipper

Chrome Plated
With File



OPT - 3011

Ean - 7261894230116

Nail Clipper

Chrome Plated
With File



OPT - 3085

Ean - 7261894230857

Toe Nail Clipper

With
Rubber Cover



OPT - 3021

Ean - 7261894230215

Nail Clipper

Stainless & Satin



OPT - 3086

Ean - 7261894230864

Nail Clipper

Stainless & Satin



OPT - 3087

Ean - 7261894230871

Nail Clipper

Stainless & Satin



OPT - 3088

Ean - 7261894230888

Cuticle Pusher



OPT - 3126

Ean - 7261894231267



15 pcs

ONE POINTED END & ONE TAPERED END:
Use the tapered end to roll back cuticles and remove dead skin. The pointed end will help you to remove nail polish smudges or clean under nails. You can also wrap the end of a stick with cotton wool to avoid damaging the cuticles and the root of the nail.

***** NAIL BUFFERS

For acrylic and natural nails. It smooths the irregularities of artificial and natural nails.



Artificial Nail File Curved Shape



OPT - 3023

Ean - 7261894230239

3-Way Nail Buffer



OPT - 3024

Ean - 7261894230246

3-Way Nail Buffer - Thick



OPT - 3147

Ean - 7261894231472

Glitter Nail File



OPT - 3025

Ean - 7261894230253



Nail File



OPT - 3027

Ean - 7261894230277

Nail File



OPT - 3077

Ean - 7261894230772

Acrylic Nail File



OPT - 3026

Ean - 7261894230260

Stainless Steel Nail File



OPT - 3078

Ean - 7261894230789

Metal Nail File



OPT - 3079

Ean - 7261894230796

Metal Nail File



OPT - 3145

Ean - 7261894231458

Metal Nail File



OPT - 3081

Ean - 7261894230819

Glass Nail Files

Made from durable, high-quality glass, easy to clean and maintain, making it a more hygienic option in nail care as it is washable and non-porous.



OPT - 3176

Ean - 7261894231762



OPT - 3177

Ean - 7261894231779



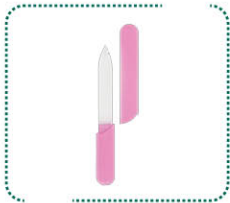
OPT - 3178

Ean - 7261894231786



OPT - 3179

Ean - 7261894231793



OPT - 3180

Ean - 7261894231809



OPT - 3181

Ean - 7261894231816



With a protective cover that keep the file clean and safe from breakage.

***** NAIL CLEANER

Made of Stainless Steel which guarantees a long-lasting cutting edge. Removes dead skin to give your finger the incredible baby soft look.

Cuticle Remover



OPT - 3082

Ean - 7261894230826

Cuticle Remover



OPT - 3140

Ean - 7261894231403

Cuticle Pusher



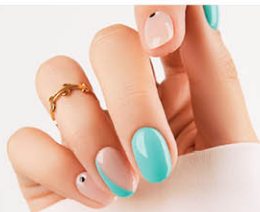
OPT - 3083

Ean - 7261894230833

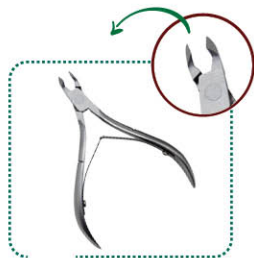


***** NAIL CLEANER

Made of Stainless Steel which guarantees a long-lasting cutting edge. Precision-crafted tip trim nails and cuticles safely, smoothly and quickly.



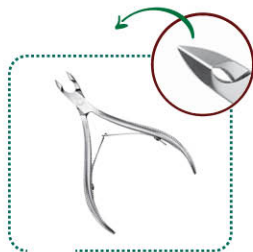
Cuticle Nipper



OPT - 3138

Ean - 7261894231380

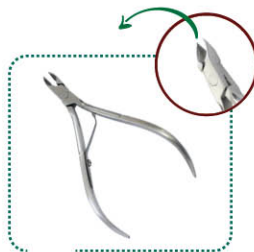
Cuticle Nipper



OPT - 3020

Ean - 7261894230208

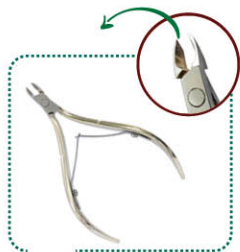
Cuticle Nipper



OPT - 3183

Ean - 7261894231830

Cuticle Nipper



OPT - 3184

Ean - 7261894231847

***** BEAUTY SET - ALL IN ONE

A professional-grade manicure and pedicure set organized in a carrying case. It includes a variety of precision tools, such as nail clippers in multiple sizes, cuticle trimmers, tweezers, scissors, a nail file, ear picks, and a range of specialized instruments for nail and skin care



17
Pieces

OPT - 3182

Ean - 7261894231823



SHAVING

A man's shaving brush is more than just a grooming accessory; it's a time-honored tool that enhances the art of shaving, offering both precision and luxury. Designed to create a rich, creamy lather, a high-quality shaving brush helps lift facial hair and exfoliate the skin, ensuring a closer, more comfortable shave.

***** WOODEN SHAVING BRUSH

- 1- Generates a rich and warm lather by whipping air into shaving cream or soap
- 2- Softens and lifts the facial hair off the face
- 3- Adds heat to the skin during the shaving process which helps open pores and lubricate the skin
- 4- Gently exfoliates the surface of the skin to rid it of dead cells



OPT - 3120

Ean - 7261894231205



DIMENSIONS: 100 x 200 cm - Big Stand



DIMENSIONS: 85 x 200 cm - Medium Stand



DIMENSIONS: 60 x 200 cm - Small Stand



COUNTER STANDS

AVAILABLE DIMENSIONS
40 x 70cm



AVAILABLE DIMENSIONS: | 40 x 200 cm

ROTARY STAND: DOUBLE SIDED



The background is a light teal color with a subtle, embossed texture. In the top right and bottom left corners, there are sprigs of green leaves and several pink rose buds. The buds are in various stages of opening, with some showing more petals than others.

THE BODY SET®

THE BODY SET®

Distributed by:

UNIMARC S.A.R.L.

Head Office:

Bd des Eplatures 64, 2300 La Chaux-de-Fonds, Switzerland

Tel: +41 762 906 320,

E-mail: info@unimarc.ch

Website: www.thebodyset.com



OPTIMAL MEDICS S.A.R.L.

Head Office:

Horizon Building, Doha Entrance, Choueifat, Lebanon

Mob: +961 70 555 445, Tel: +961 5 812 850,

E-mail: info@optimalmedics.com

Website: www.optimalmedics.com